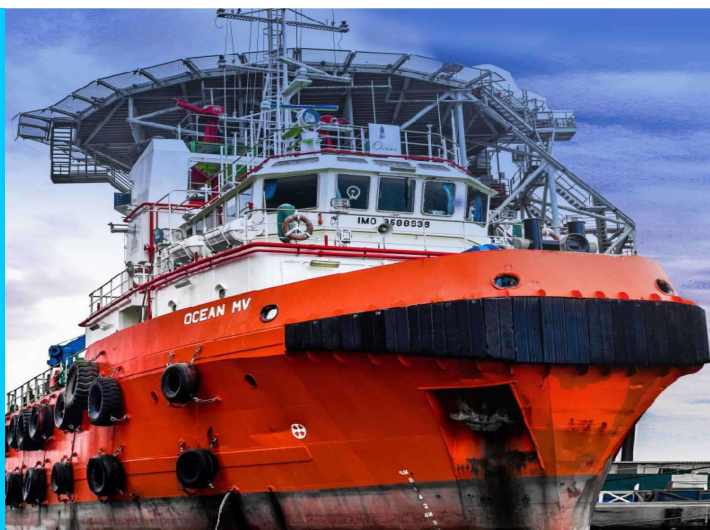


OCEAN MV

50M ANCHOR HANDLING TUG & SUPPORT VESSEL (AHTS)



STANDARD SPECIFICATION – AHTS VESSEL

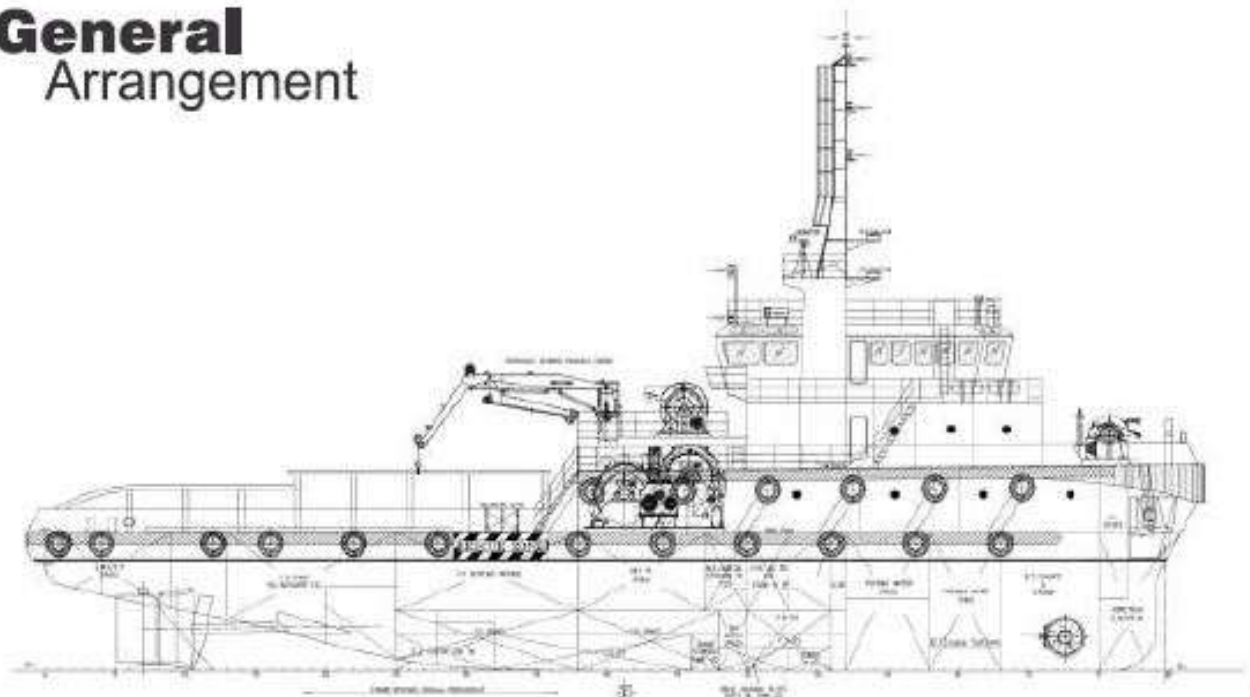
GENERAL DESCRIPTION		PERFORMANCE	
Year of build	2011	Max Speed	12 Knots
Builder	Shin Yang Shipyard – MIRI, Malaysia	Service Speed	10 Knots
Registry	Liberia / Monrovia	Fuel Consumption	12 Tons MDO Per Day
Class	Bureau Veritas (BV)	ACCOMMODATION	
IMO	9588938	Accommodation	23 Men (1 Man x 3 ; 2 Men x 6; 4 Men x 2)
Call Sign	9WLC9	Cabin	2 x 4 Men Cabin, 6 x 2 Men Cabin, 3 x 1 Men Cabin
PRINCIPAL PARTICULARS		WINDLASS & MOORING	
Length Overall	49.95 M	Towing Winch	150 T
Breadth Molded	12.60 MM	Upper & Lower Mooring drum	56 MM x 1000 M
Depth Moulded	5.75 M	Bollard Pull	72 T
Design Draft	4.80 M	Tugger Winch	2 x 10T
Deadweight	842 Ton	Windlass	1 x 5T AT 6.2 Ton x 10 M/MIN
Registered Tonnage	GRT 954 T, NRT 286 T	Anchor	2 x Stockless Bower Anchor
MACHINERY		Chain	38mm Dia x 27.5 m x 10 length each side
Main Engines	2 x CAT 3516B (2x2575 BHP)	Rope Reel	10T at 20 M/MIN
Horse Power	2575 BHP@1600RPM	Capstan	20 x 5T at 15 M/MIN
Gear Box	2 Units Ratio 5.76	Towing Pin	200 Tonnes
Auxiliary Engines	2 x Cummins QSM11-D(M) 265 KW @1500 RPM	External Fire Fighting	Volvo Engine Driven FIFI- 1
Alternators	2 x 250 KW /415V /50HZ	NAVIGATION & COMMUNICATION	
Emergency Genset	1 x Cummins 6CTA8-3-D(M) 1 x 150 KW	Echo Sounder	JMC F200
Propellers	Manganese Bonze/4 Blade fixed pitch in KORT Nozzle	VHF Radio Telephone	2 x Furuno FM-8800S. 1 X VHF Ico mic-M330 1 X VHF Furno
Bow Thruster	RIQ 640BTM Engine 500HP(Cummins) 5T Thrust	EPIRB	GME MT 403 FF
Sewage Treatment Plant	Capacity 35 Men (Made in Kora) ISS-35,2.1m3/day	SART	1 x NSR NRT – 1000 SART 1 x JOTRON – TRON SART 20
Steering System	Electro-Hydraulic C/W Joystick at Forward and AFT Consoles	GPS Navigator	1 x Furuno GP – 150 1 x Furuno RD – 30 1 x NSR – NGR 3000
Oil Water Separator	15PPM Bilge Separator (Korea Made)	AIS	Furuno FA - 150
Fuel Transfer Pump	1 x 10 M3/HR @ 20M Head	Gyro Compass	Tokyo Keiki TG - 8000
Bilge & Ballast Pump	70 M3/HR @ 20M Head	Autopilot	SIMRAD AP50
Cargo Oil Pump	70 M3/HR @ 50M Head	GMDSS Hand Held Radio	3 x ICOM IC – GM 1600
Dirty Oil Pump	5 M3/HR @ 30M Head	Radars	2 x Furuno FAR - 2117
CAPACITIES		NAVTEX Receiver	Furuno NX – 700B
Fuel Oil	500 M3	SSB Radio	2x Furuno FS - 2570
Fresh Water	242 M3	Communication	FBB Sailor 150
Lube Oil	14 M3	Magnetic Compass	Daiko SR - 150
Dirty Oil	5 M3	Doppler Speed Log	BEN /GA - 120
Freezer/Chiller	10 M3	Wind Indicator	NorthStar Explorer W310
Clear Deck Area	22M X 10M	Barometer	Hanseatic
Deck Strength	5 T	BNWAS	SRC – NBA100
		ECIDS	1x Tansan NS400 1x Synapsis



Additional information please contact: Ocean Oilfield Drilling, PO Box: 132612, Mussafah MN1, Abu Dhabi, UAE
Tel: +971 2 444 5852 / 2 575 1888 Email: marketing@oceanoilfield.com Website: www.oceanoilfield.com

These specifications are intended for general reference purposes only, as actual equipment and specifications may vary based upon subsequent changes, the contract situation and customer needs. All equipment shall be operated and maintained at all times, in compliance with Ocean Oilfield standard operating manuals, policies and procedures and within its stated operational limits or continuous rated capacity, in order to assure maximum operational efficiency.

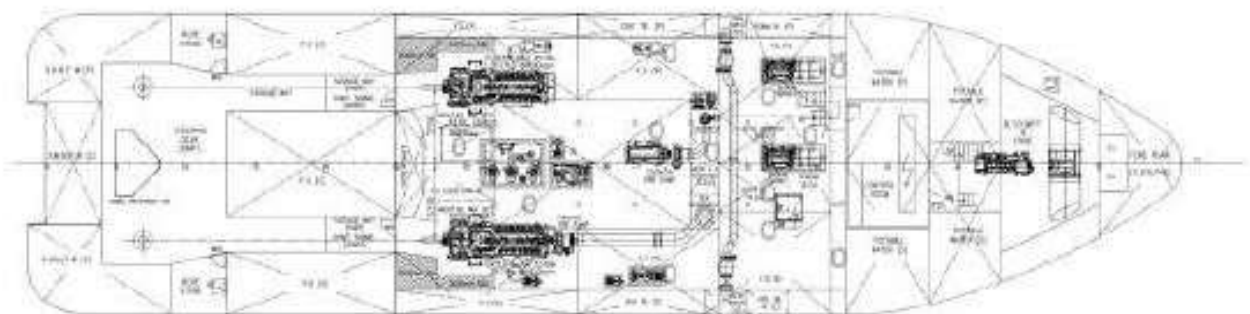
General Arrangement



OUTSIDE PROFILE



MAIN DECK



BELOW MAIN DECK



Additional information please contact: Ocean Oilfield Drilling, PO Box: 132612, Mussafah MN1, Abu Dhabi, UAE
Tel: +971 2 444 5852 / 2 575 1888 Email: marketing@oceanoilfield.com Website: www.oceanoilfield.com

These specifications are intended for general reference purposes only, as actual equipment and specifications may vary based upon subsequent changes, the contract situation and customer needs. All equipment shall be operated and maintained at all times, in compliance with Ocean Oilfield standard operating manuals, policies and procedures and within its stated operational limits or continuous rated capacity, in order to assure maximum operational efficiency.