



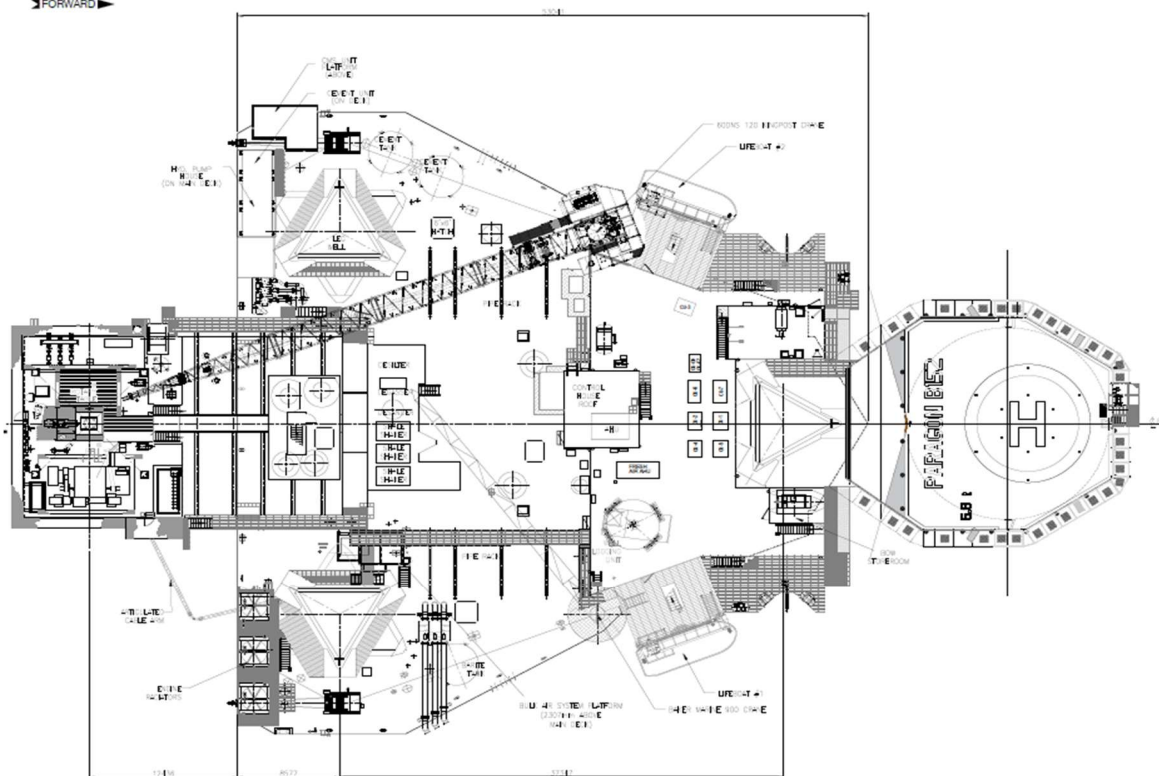


# RIG: B152

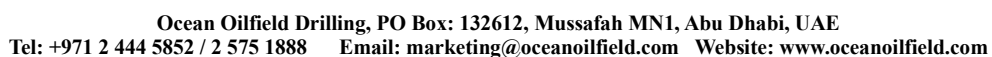


## STANDARD SPECIFICATION JACK-UP

GENERAL DESCRIPTION		STORAGE CAPACITIES	
Design / Generation	Baker Marine 150 ILC	Fuel Oil	1,720 bbls
Constructing Shipyard	Ingleside, Texas (Upgrades, 2004)	Liquid Mud	1,705 bbls
Year Entered Service/ Significant Upgrade	1982	Drill Water	3,382 bbls
Classification	ABS, A1, Self-Elevating Drilling Unit	Potable Water	1,241 bbls
Flag	Liberia	Bulk Material	(mud + cement) 7,552 cu-ft
Overall Dimensions	247 ft long x 178 ft wide x 18 ft deep	Sack Storage	2,000 sacks
Legs	(3) 250ft. long, Triangular	BOP & WELL CONTROL EQUIPMENT	
Draft	11.67 ft at load line	BOP Ram	(1) AXON type-50 13 5/8"10k Single BOP
Accommodation	120 persons	BOP Ram	(1) AXON type-50 13 5/8"10k Double BOP
Displacement	13,764kips	BOP Annular	(1) AXON Type-52 (GL) 13 5/8"5k Annular BOP
Variable Deck	4,373 kips operating / 1,943 kips transit (spud cans full)	BOP Handling	(2) Ingersoll Rand 25MT
Transit Speed	Up to 4 knots, @ 9,000 hp sea tug	Diverter	AXON Type-52 (GK) 21 1/4" 2k Annular Preventer
Operating Water Depth	150 ft. designed / 150 ft. outfitted	MOORING EQUIPMENT	
Maximum Drilling Depth	20,000ft	Mooring Winches	(2) ARMCO electric winches rated at 28,400 lbs pull
DRILLING EQUIPMENT		Anchor Lines	(2) National Marine 1,700ft x 1.5" galvanized wire rope
Derrick	Pyramid, Beam leg type; 160 ft high with 30 ft x 30 ft base	Anchors	N/A
Hook-load Capacity	1,100,000 lbs. gross nominal capacity	CRANES	
Cantilever/ Drill floor	40 ft / 12 ft Port & Stbd	Cranes	(1) Baker Marine Model 900, 100ft boom, 22.7Mt @ 6.1m (Stbd)
Draw works	National 1320-UE Max hook load 1,100 kips with 12 lines. (2) x GE DC motors suitable for 1.375" drill line		(1) National Oilwell DNS-60 120,58.96Mt @ 7.22m (Port), 120ft boom
Rotary Table	National C-375 37.5" table opening electric drive, rated 650 st	SPECIAL FEATURES & OTHER INFORMATION	
Top Drive	Varco Model TDS-5H Electric 500 st,1300 HP	Helideck	Rated for 6.8 MT Bell-412 & AW 139. CAR-HVD Part II Issue 01 March 2023
Mud Pumps	(2) National 12-P-160 triplex pumps, each driven by 800 hp (GE DC motor) 4,250 psi rated		
Solids Control	(4) Derrick Linear Shale Shakers		
POWER & MACHINERY			
Main Power	(3) Caterpillar 3516B diesel engines rated at 2,150 hp at 1200rpm each with KATO generator rated to 2,400KVA		
Emergency Power	(1) Caterpillar D399 diesel engine rated at 1,200hp at 1,200rpm with KATO generator rated to 1,000KW		
		<b>Additional information please contact:</b> Ocean Oilfield Drilling, PO Box: 132612, Mussafah MN1, Abu Dhabi, UAE Tel: +971 2 444 5852 / 2 575 1888      Email: <a href="mailto:marketing@oceanoilfield.com">marketing@oceanoilfield.com</a> Website: <a href="http://www.oceanoilfield.com">www.oceanoilfield.com</a>	
These specifications are intended for general reference purposes only, as actual equipment and specifications may vary based upon subsequent changes, the contract situation and customer needs. All equipment shall be operated and maintained at all times, in compliance with Ocean Oilfield standard operating manuals, policies and procedures and within its stated operational limits or continuous rated capacity, in order to assure maximum operational efficiency.			



Technical drawing of the ship 'F.R. 221' showing a side profile and a crane layout. The side profile includes a mast, funnel, and various deck structures. The crane layout shows two large cranes and a helicopter landing area. A scale bar at the top indicates distances in meters.



These specifications are intended for general reference purposes only, as actual equipment and specifications may vary based upon subsequent changes, the contract situation and customer needs. All equipment shall be operated and maintained at all times, in compliance with Ocean Oilfield standard operating manuals, policies and procedures and within its stated operational limits or continuous rated capacity, in order to assure maximum operational efficiency.